

MARION I



COASTAL ELEVATION



CLASSIC ELEVATION



CRAFTSMAN ELEVATION



LOGAN
HOMES

LOGANHOMES.COM



Void where prohibited. Floor plans/elevations/options are subject to change without notice. Illustrations are artists renderings. Some items illustrated or pictured are optional and are at an additional cost. Dimensions are approximate. Floor plans/elevations are subject to change without notice. ©Logan Homes 2023. Revised 6/6/23

MARION I

SQUARE FOOTAGE

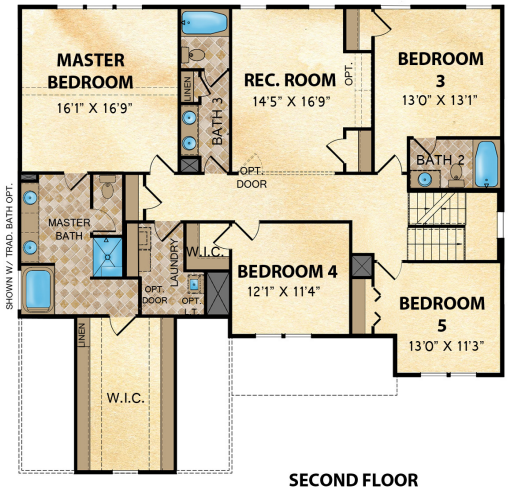
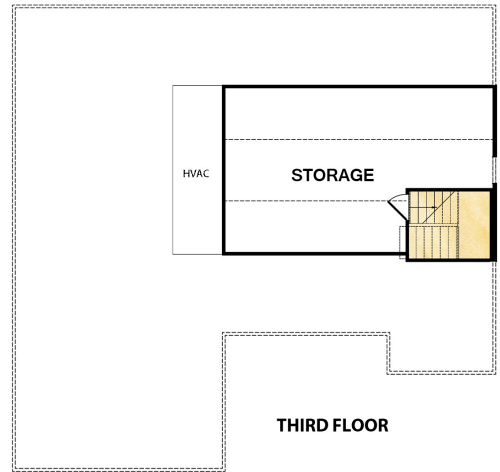
1,492' First Floor SF Heated

1,807' Second Floor SF Heated

3,299' Total SF Heated

561' Two-Car Garage

103' Front Porch



AVAILABLE OPTIONS

501' Bonus Room A

144' Covered Porch

Alt. Master Bath

Base Master Bath

Spa Master Bath

